



Final Details – Millbuies Country Park – 5 March 2022

We would like to thank **Moray Council** for giving its permission to stage the event.

Club Awards Presentation. There will be a presentation of trophies and medals for the Club's league and prize winners for 2021. Please support the event. This will start around 1245 hours and take place next to assembly. A tent will be available at assembly for competitors to leave bags and clothing.

COVID-19

- All participants must abide by the British Orienteering COVID Code of Conduct. Details to be found at: https://www.britishorienteering.org.uk/COVID19_Safe_Orienteering
- Please remember that anyone with COVID-19, either displaying symptoms or in quarantine, should not attend the event in line with the British Orienteering COVID Code of Conduct.
- Participants are also reminded to minimise contact with any fences and gateposts on the course and with SI boxes and kites.
- Participants must remain 1m apart from others (except family groupings): in registration; walking to/from start/finish locations and on the course.
- Hand sanitizer will be available at registration and the start area for participant use as required.
- Disposable gloves will be available at registration for control collectors as required.

Event Safety

- **Competitors.** Participants take part at their own risk and are responsible for their own safety at all times. All participants are to wear suitable footwear and full leg cover.
- **Terrain Hazards.** Participants are advised that they may encounter tree roots, stumps, brash and windblow/fallen trees due to the recent storms. Participants on the orange course are advised that they may encounter some small organised brash piles across the paths/rides to the West of the course, which can be walked around or jumped over. Participants are also advised that the bridges crossing the fishing lochs may be slippery if wet.
- **Log Hazards.** All courses may encounter log piles which must not be climbed.
- **Water Hazards.** All courses route near the fishing lochs which must not be entered.
- **Roads.** Whilst competing, the Millbuies Access Road may be crossed but not run along. Participants should verify that the road is safe to cross before doing so. The road will not be marshalled but will have 'caution runner' signs pre-positioned. Also, all courses cross a farm track which may be used by farm vehicles.
- **Parking.** Car parking will be available at the Millbuies Country Park and at the Fogwatt Village Hall. From the Fogwatt Village Hall car park, participants will need to cross the main A941 road which can be busy. Adults are responsible for their own safety, and that of their children. A marshal will be at the Fogwatt Hall to assist in the A941 road crossing. The route from Fogwatt Hall to assembly routes via the Millbuies access road. Participants must take care. 'Caution runner' signs will be displayed for road users.
- **Ticks.** Millbuies Country Park may have ticks so please check yourselves carefully after your run and remove them as soon as possible, and ideally within 48 hours.
- **First Aid.** A first aid kit will be available at registration, as and if required. The nearest hospital is Dr Gray's in Elgin (15 mins drive away).

Directions

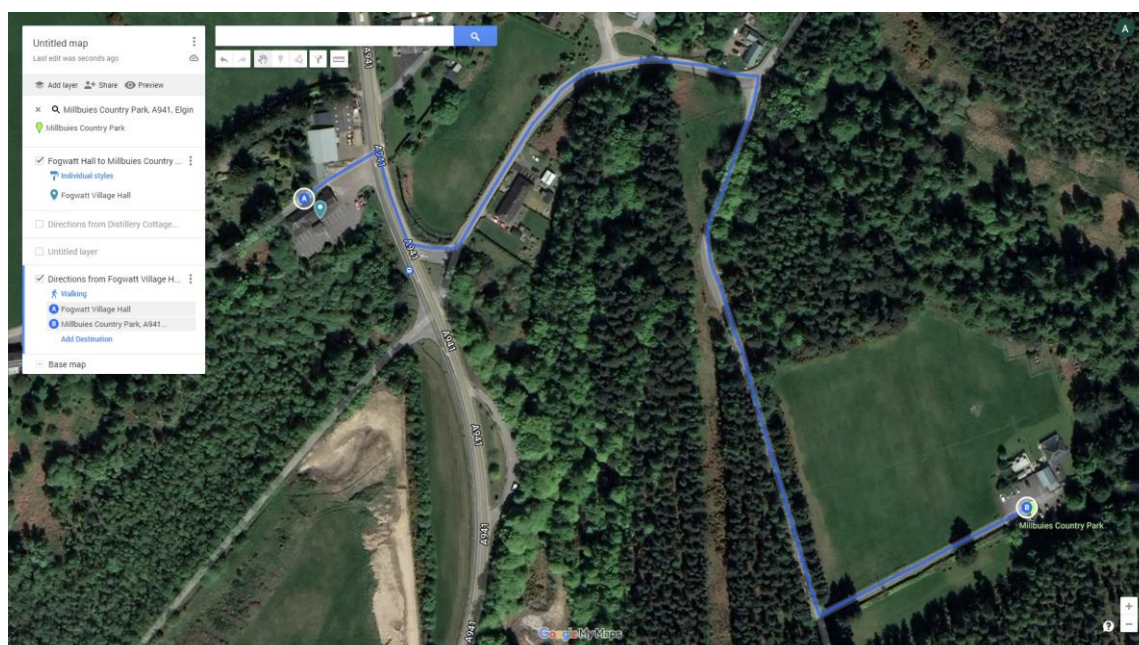
- The event will be sign posted from the A941 at Fogwatt. The road from the A941 to the Millbuies Country Park is single track in places. There will be runners crossing the Millbuies access road. Please take care.

Registration/Download

- The event registration and download will be at the Millbuies Country Park (IV30 8FW/NJ238566/what3 words: <https://w3w.co/suits.clutches.studio>).
- Please plan to arrive at assembly no more than 20 minutes before your starting block to minimise the gathering of participants in line with SOA guidance.
- Orange and Yellow course maps will be issued at registration.
- Hired SI dibbers will be available for collection at registration.

Car Parking

- Car parking will be available at the Millbuies Country Park and at the Fogwatt Village Hall.
- As Millbuies Country Park will be open to other users, it is requested that **only** volunteers and participants with children park at the Millbuies Country car park. A marshal will be available to direct vehicles. If that car park is full, then drivers have the option to drop off children/participants and then park at the Fogwatt Village Hall car park.
- All other participants are requested to park at the Fogwatt Village Hall, immediately off the A941 at Fogwatt. A marshal will be available to direct vehicles. There will be an approximately 750m walk to the event assembly from this car park, which will be taped and follow the Millbuies access road (see map below). Please allow 10-15 mins to complete that journey on foot.



Start

- The Start is adjacent to the event registration and download.
- Starting blocks in 15 minutes from 1030-1045 to 1145-1200 have been pre-selected in SI entries.

- Please do not arrive at registration/assembly more than 20 mins before your starting block to minimise the gatherings of participants. Please maintain 1m distancing at all times.
- Please do not enter the start boxes until 3 mins before your start time. At -3 mins, please 'clear', at -2 mins please 'check' and -1 mins please 'wait'.
- A start official will be available to guide participants to move through the start area as required.

Finish

- On finishing, all competitors must report to download – even if you retire and do not complete your course.
- The Finish is adjacent to the event download.
- All courses close at 1300. Controls will be removed progressively after this time. At this time, all competitors on the course must return to registration and report to download.

Timing

- SI Units will be mounted on metal stakes. They will **not** be SI-AIR enabled.
- Participants must physically dib the start and finish SI units to start/finish their timings.

Map

- Control descriptions are printed on each map.
- Loose control descriptions will be available in the start boxes.

Additional Information

- **Toilets.** There are no toilet facilities at Millbuies Country Park. The nearest public toilets will be in Elgin (Asda Superstore).
- **Other Forest Users.** Please respect other users of the Forest (dog walkers, horse riders and cyclists) and maintain 1m distancing.
- **Car Keys.** There will be no means of leaving car keys.
- **Litter.** All competitors are asked to take their litter home with them.
- **Dogs.** Dogs are welcome but must be kept on leads.

See you on Saturday.

Moravian Orienteers

Organiser: Andrew Campbell

Organisers Phone: 0795 162 8600

Organisers Email: andrewandlizcampbell@outlook.com

Planner: Karen Fraser